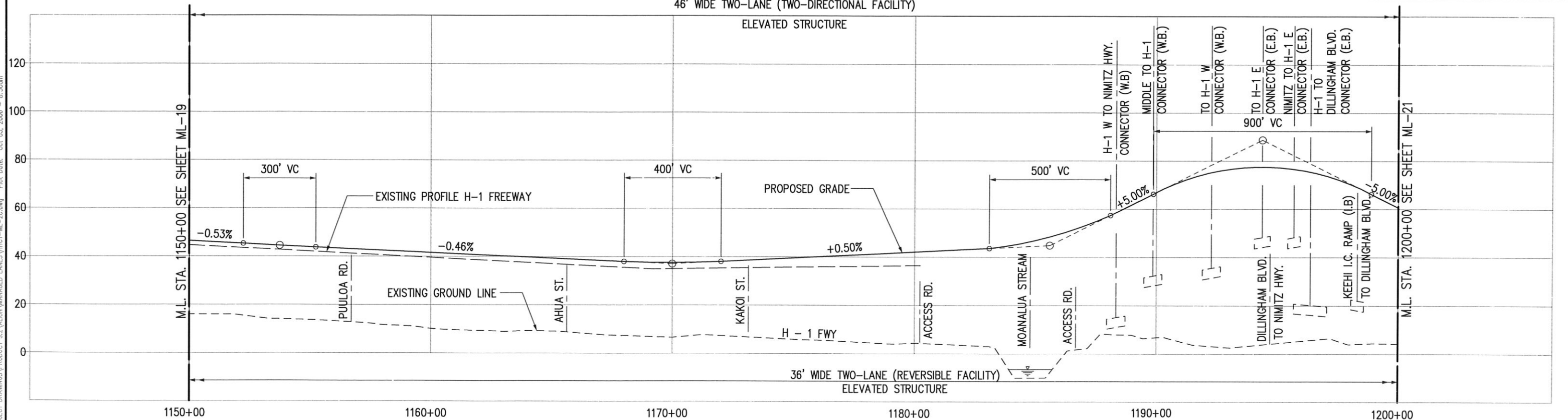


NOTE: PLANS ARE PRELIMINARY AND SUBJECT TO CHANGE
 46' WIDE TWO-LANE (TWO-DIRECTIONAL FACILITY)



Drawing File: \\A:\PROJECTS\DRAWINGS\PRODUCT\92\ALUM\MANAGED LANES\H1CT-ML-20.dwg Plot Date: Oct 03, 2006 - 8:50am



CITY & COUNTY OF HONOLULU
 DEPARTMENT OF TRANSPORTATION SERVICES

**HONOLULU HIGH-CAPACITY TRANSIT
 CORRIDOR PROJECT
 ALTERNATIVES ANALYSIS**



**PLAN AND PROFILE
 MANAGED LANE ALTERNATIVE
 STA 1150+00 TO STA 1200+00**

PAGE NO. _____
 DRAWING NO.
ML-20
 DATE: 10/06/06